



## Welcome to today's Listening Session!

**We will begin shortly. All lines have been automatically muted.**

While you are waiting TEST YOUR AUDIO.

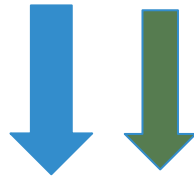


Please use the chat feature for questions or raise your hand.

Thank you.

# Zoom Webinar Controls

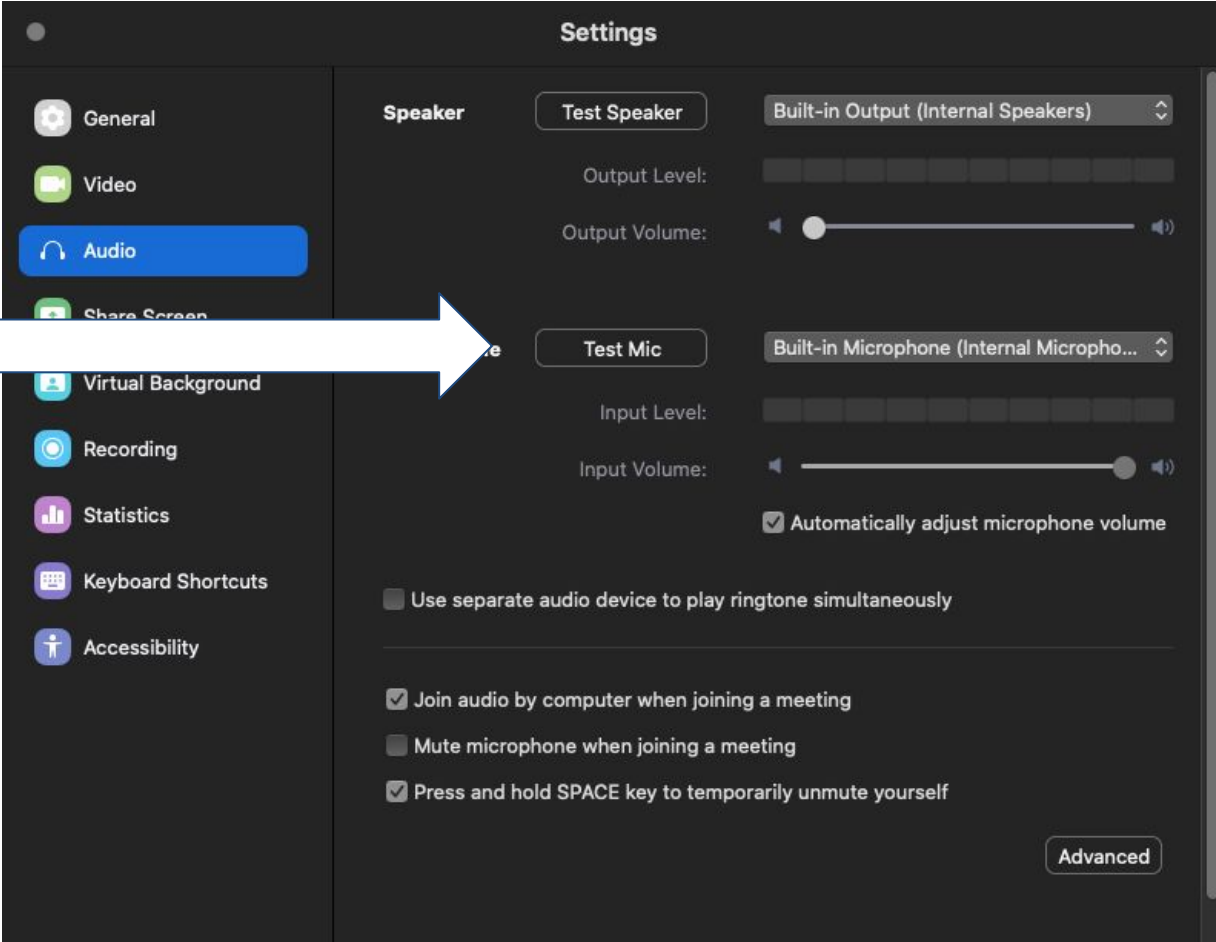
Navigating your bar on the bottom...



- **Windows:** You can also use the **Alt+Y** keyboard shortcut to raise or lower your hand.
- **Mac:** You can also use the **Option+Y** keyboard shortcut to raise or lower your hand.

A screenshot of the Zoom Webinar interface. On the left, a 'Select a Speaker' menu is open, showing options: 'Same as System', 'Built-in Output (Internal Speakers)' (checked), 'Test Speaker &amp; Microphone...', 'Leave Computer Audio', and 'Audio Settings...'. A white arrow points from the 'Audio Settings...' option to the 'Audio Settings' button in the bottom control bar. The bottom control bar is dark grey and contains icons for 'Chat' and 'Raise Hand', and a red 'Leave' button on the right.

# Audio Settings



The screenshot shows the Zoom Settings application with the 'Audio' category selected in the left sidebar. The main panel is titled 'Settings' and 'Speaker'. It features a 'Test Speaker' button, an 'Output Level' bar, and an 'Output Volume' slider. Below this is a 'Test Mic' button, an 'Input Level' bar, and an 'Input Volume' slider. A checkbox for 'Automatically adjust microphone volume' is checked. At the bottom, there are three more checkboxes: 'Use separate audio device to play ringtone simultaneously' (unchecked), 'Join audio by computer when joining a meeting' (checked), 'Mute microphone when joining a meeting' (unchecked), and 'Press and hold SPACE key to temporarily unmute yourself' (checked). An 'Advanced' button is located in the bottom right corner. A large white arrow points from the 'Audio' sidebar item to the 'Test Mic' button.

Settings

General

Video

Audio

Share Screen

Virtual Background

Recording

Statistics

Keyboard Shortcuts

Accessibility

Speaker

Test Speaker

Built-in Output (Internal Speakers)

Output Level:

Output Volume:

Test Mic

Built-in Microphone (Internal Micropho...)

Input Level:

Input Volume:

Automatically adjust microphone volume

Use separate audio device to play ringtone simultaneously

Join audio by computer when joining a meeting

Mute microphone when joining a meeting

Press and hold SPACE key to temporarily unmute yourself

Advanced



# Tribal Housing Listening Session

February 1, 2021



# Tribal Housing Discussion

Amanda Bahe, AHCCCS Tribal Liaison



# Intention of Today's Session

- Help AHCCCS better understand unique housing systems and needs on tribal lands to inform our work on housing initiatives moving forward
- Voices from tribal housing programs, CHR programs, and other ITU-specific programs at the table.
- Group guidelines:
  - Respect
  - Member-specific info not to be shared
  - Recording answers for informational purposes

# Outcomes

- AHCCCS Housing Programs would like to understand unique realities of tribal members and tribal housing systems (including providers)
- Help improve current and planned housing-related programs with a focus on:
  - Member experience
  - Focus
  - Coordination

# Guide to Acronyms

Acronym	Term
AHCCCS	Arizona Health Care Cost Containment System
TXIX	Title 19
NTXIX	Non-Title 19
GMHSU	General Mental Health/Substance Use
SMI	Serious Mental Illness





# AHCCCS Housing Programs (AHP)

David Bridge, AHCCCS Director of Housing Programs



# History

## 1989 –Arnold v. Sarn (Maricopa)

- Court Order Included Housing
  - Maricopa HUD CoC for SMI Housing
  - AZ Legislative Appropriations
    - Units purchased and rehabbed (ex: SB2003)
  - Subsidies/Scattered Sites Programs

## 2016 Arnold v. Sarn Settlement/Exited

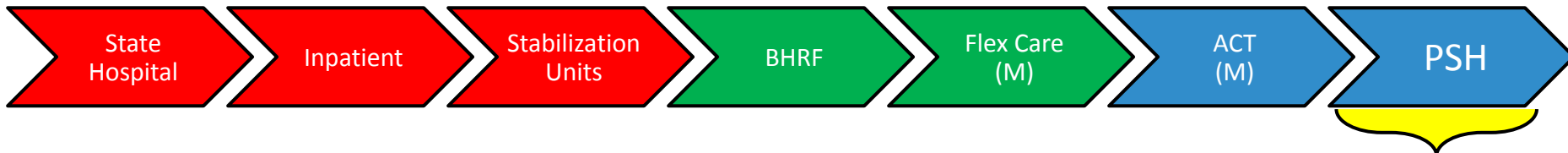
- Housing in Exit Stipulations
- AHCCCS/DBHS Integrated Care
- AHCCCS as funder/Regulator RBHAs as operators





# Housing Solutions

# Behavioral Health Housing Continuum



- Treatment Based
- Services Mandatory
- Length of Stay Clinically Determined
- Restrictive – Cannot Leave
- Site/Facility Based



- Housing Focused
- Services Voluntary (for member)
- Length of Stay
  - Member Determined
  - Indefinite
- Independent Living
- Community Based

# PERMANENT SUPPORTIVE HOUSING

## PERMANENT SUPPORTIVE HOUSING

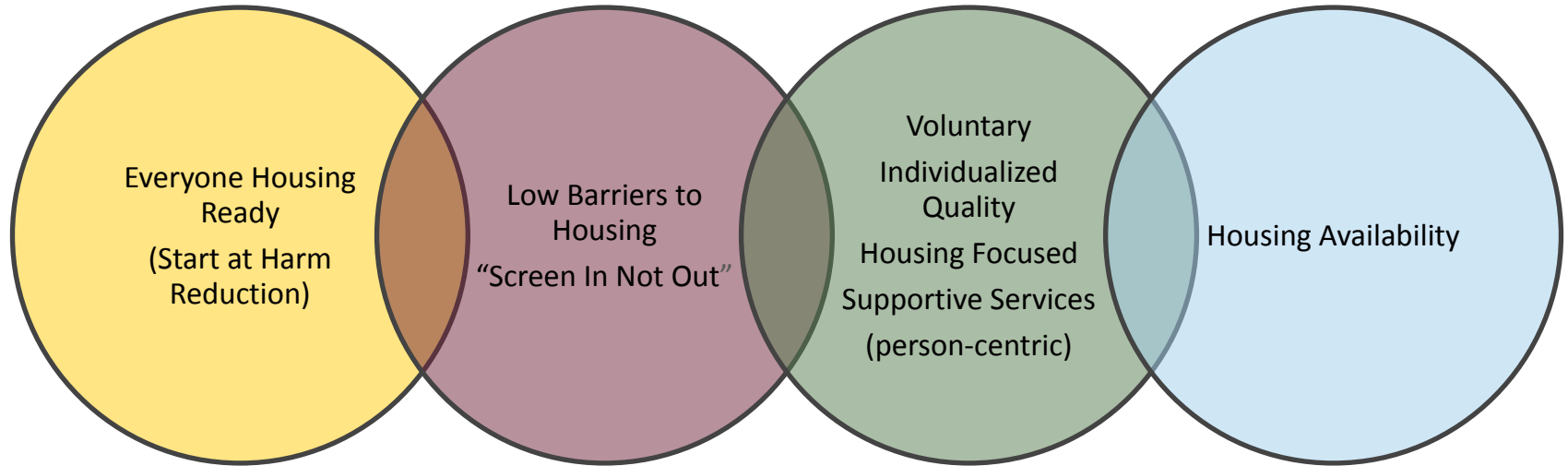
A combination of **housing** and individualized **services** designed for people with serious mental illnesses or other disabilities who need support to live stably in their communities. It is a proven solution for people who have experienced chronic homelessness as well as people with disabilities

PERMANENT

SUPPORTIVE

HOUSING

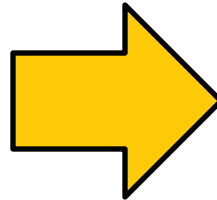
# Permanent Supportive Housing Principles



# Medicaid Reimbursable Supportive Services

## Behavioral Health (Medicaid)

- Group Counseling
- Case Management
- Individual Peer & Family supports
- Life Skills
- Health Promotion
- Medication Assistance
- Transportation
- Mainstream Benefit Assistance
- Pre & Post Employment Support



COMMON AHCCCS MEDICAID ELIGIBLE SUPPORTIVE HOUSING SERVICES	
<u>Pre Tenancy (Attain)</u>	<u>Tenancy (Sustain)</u>
ID and Documents	Crisis Planning
Completing Applications	Budgeting
Understanding Lease and Notices	Employment Support
Housing Search	Benefit Applications
Prep for Negotiations/Interviews	Life Skills (Cooking, Hygiene)
Accommodation Requests	Socialization
Move in Coordination	Family and Natural Supports
Attending Housing Briefings	Conflict Management
Budgeting and Planning	Landlord Communication
Identifying Housing Barriers	Substance Abuse Supports
	Lease Renewal/Recertification

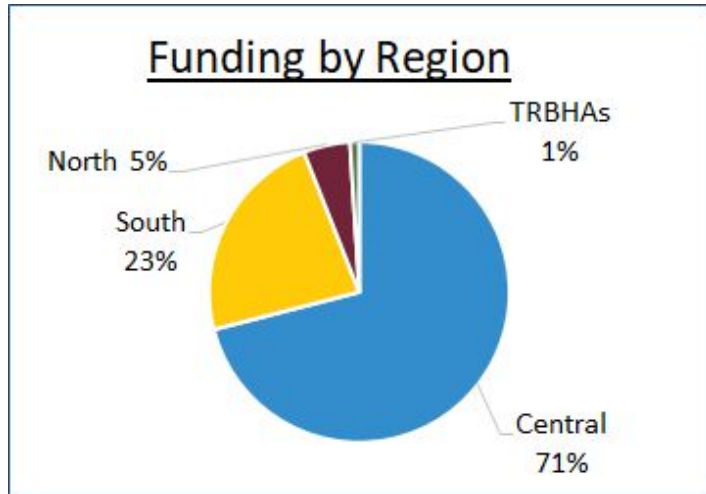


# AHCCCS HOUSING PROGRAMS



# AHCCCS Housing Program Funding (2021 Proposed Housing Allocations)

FY 2021	Non-TXIX SMI Housing	Supported Housing	SMI HTF Housing Projects/Rental Subsidy
Total	\$22,498,821	\$5,324,800	\$2,000,000



## **FUNDING/ELIGIBILITY CONSIDERATIONS:**

- Non XIX and Supported Housing Funds are State funded/discretionary
- Community Needs/Legislative Priorities/Funding Requirements
- Tribal Strategies
  - Funding Provided to 4 TRBHAs through spending plan process
  - All SMI members should have access to RBHA housing

# Background – Eligibility/Activities

	POPULATION			MEM. ELIGIBILITY			ELIGIBLE ACTIVITIES				
	SMI	GMHSU		XIX	NXIX		FIXED SITE SUBSIDIES	SCATTERED SITE SUBSIDIES	ONE TIME HOUSING SUPPORT	CAPITAL	SUPPORT SERVICES
<b>SMI GF - Housing</b>	YES	NO		YES	YES		YES	YES	YES	YES**	NO
<b>Supported General Housing Fund</b>	YES	YES		YES	SMI ONLY		YES	YES	YES	YES**	NO
<b>SMI Housing Trust Fund</b>	YES	NO		YES	YES		YES*	YES*	NO	YES	NO

- Per Laws 2019, 1st Regular Session, Chapter 270, funds can be used for rental assistance for SMI persons. Currently used in Bridge subsidy programs.
- \*\*Subject to AHCCCS approval only. Note - AHCCCS does not do GMH/SU Housing Projects.

# Current TRBHA Housing Activities

Utility  
Assistance

Home  
Improvements

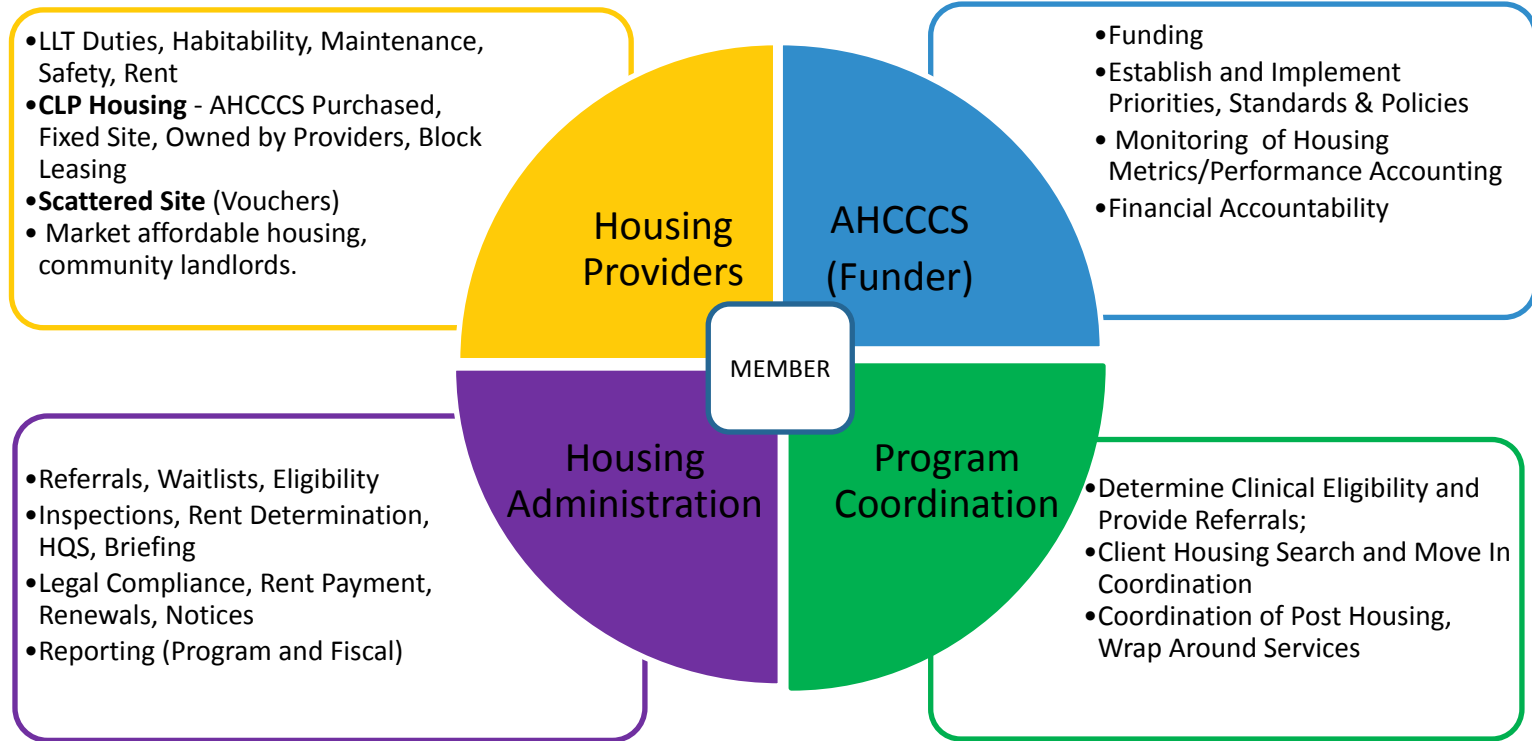
Eviction  
Prevention

Rent Subsidies

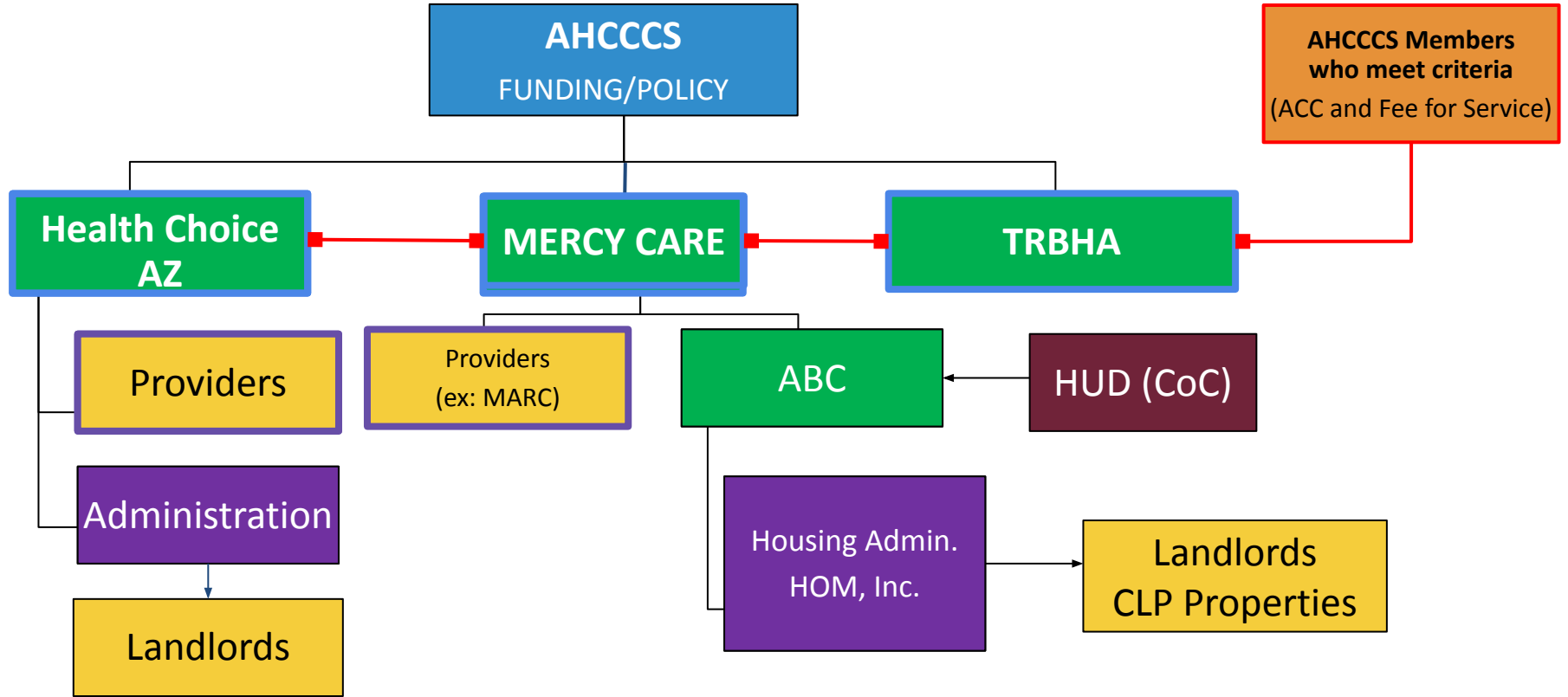


# HOW DOES IT WORK?

# Housing Functions



# CURRENT STRUCTURE



# PROPOSED HOUSING ADMINISTRATION

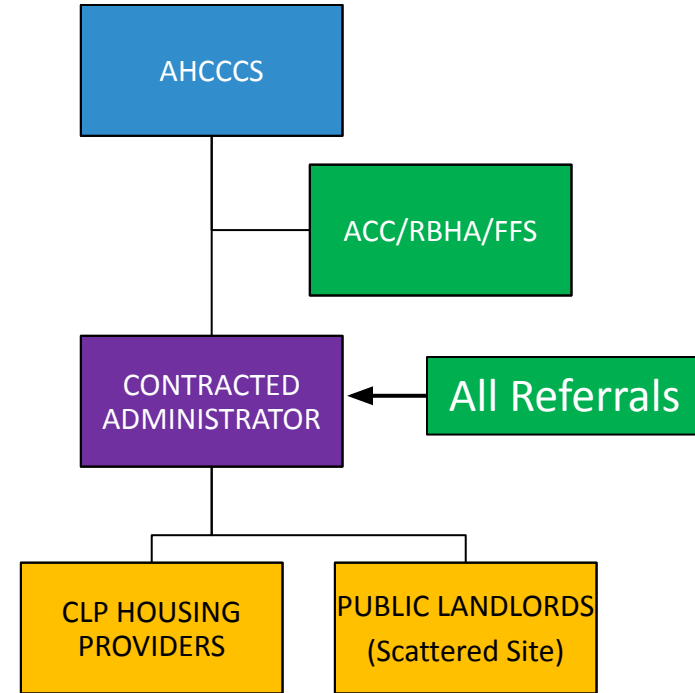
Funding Allocation to Contractor  
Establish and Implement Standards, Policies  
Oversight of Contractor Metrics, monitoring  
Oversight of Referral Process

Coordination of Clinical Eligibility and Referrals  
Client Housing Placement Coordination  
Clinical Coord. of Post Housing Wrap Around Services

## Housing Administration

Waitlist Mgmt.; Inspections; Client Briefing/Lease Up; Utilization; Legal Compliance (Fair Housing); Landlord Payment; Housing Outcome Reporting and Tracking; HUD Unit Management; Renewals/Re-certifications; Fiscal Reporting; Notices

**CLP Housing** – AHCCC Purchased, Fixed Site, Owned by Provider/Non Profits, Block Leasing  
**Scattered Site (Vouchers)** – Market affordable housing, community landlords.



# AHCCCS Challenges to Tribal Housing Coordination

- Grant Requirements and Accountabilities
- RBHA Structure/Focus
- Lack of Knowledge of Tribal Resources/Entities/Realities
  - Scope of Needs (Quantity and Type)
  - Housing Authorities, Human Services Partners
  - Use of funds tribal lands
  - Unique tribal governmental systems



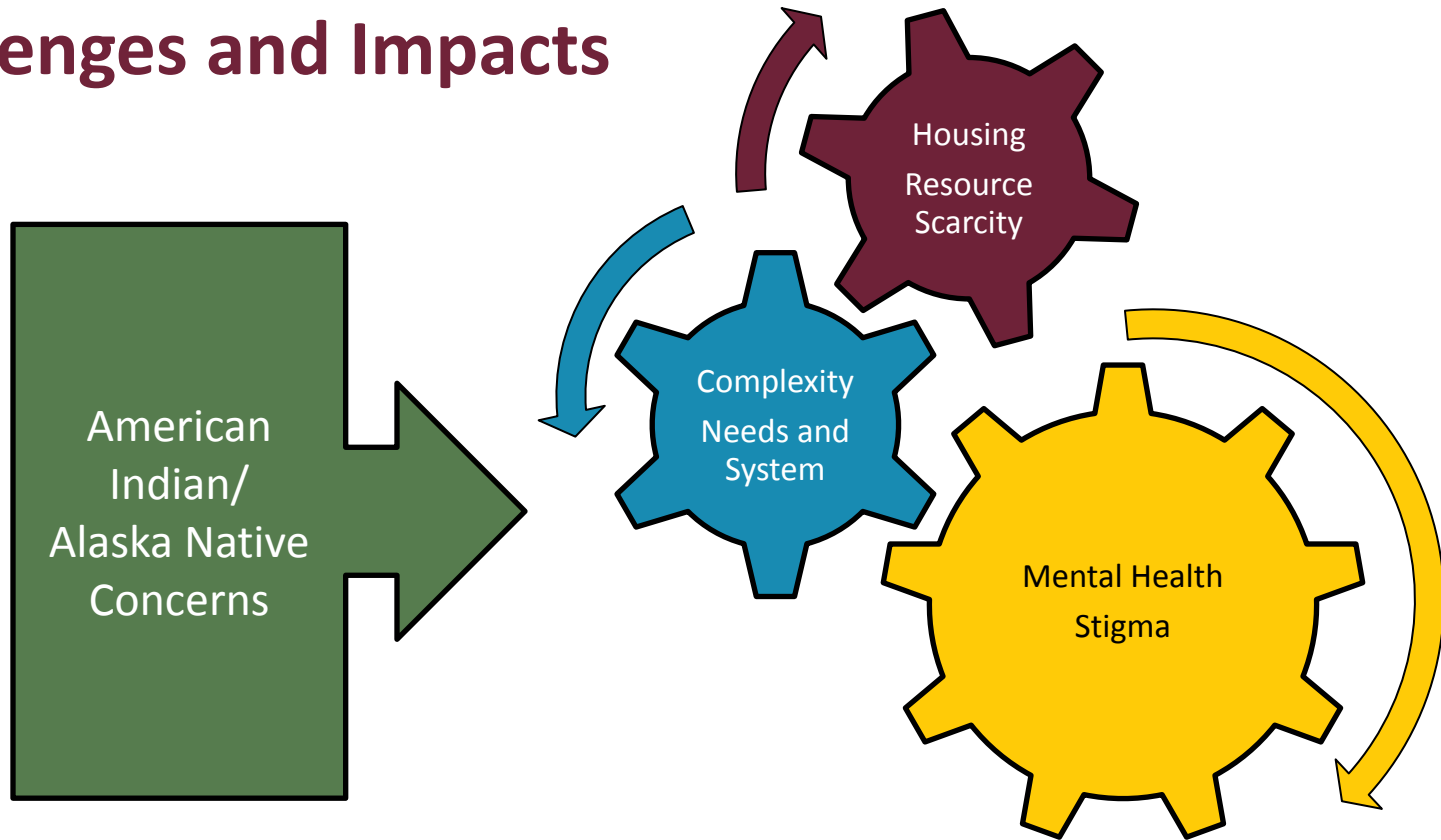
# Open Discussion

## Chat Questions



# Breakout Questions

# Challenges and Impacts



## Group Questions

- Based on our current services, how could we expand for tribal nations and communities?
- Who would be a current “provider” for referrals?
- Who would be a current “provider” for service coordination?
- What is your perception of barriers to housing for members you serve?

# Group Questions

- Would it be appropriate for AHCCCS to target a specific population within tribal communities?
  - Right now we focus on SMI members - should this focus be expanded?
- General “risk” profiles we currently focus on include unsheltered relatives, justice-involved individuals, “high cost high need” members.
  - How are each of these populations defined in your community?
  - Are there other profiles that we should consider?
- What types of societal issues related to Indigeneity should be addressed?

# System Questions

- What are current barriers to accessing housing funds through AHCCCS?
- What are current barriers to coordinating housing services for tribal members:
  - On tribal lands?
  - Off tribal lands?

## Provider Questions

- What does housing referral currently look like for the tribal members that you serve?
- What are current barriers to helping coordinate housing services for members that you serve?

# Concluding Questions

- Highlighted Questions:
  - Who else should be in the room?
  - Bright Ideas: Solutions
  - One or two key takeaways from group



# Next Steps

- AHCCCS will send out a survey with all questions - please respond with additional feedback/concerns/questions.
  - Due 3/5/2021 COB.
- AHCCCS will consolidate all responses and send out a summary to the group.
  - Document will be shared with executive leadership team for system transformation.
- AHCCCS will alert group of any future housing-related meetings moving forward.

Thank You.

# Resource Slides

\*Provided for reference outside of session.

# Permanent Supportive Housing Eligibility

PSH provides housing opportunities for homeless individuals diagnosed as having a serious mental illness and enrolled with Mercy Care. Members must also have a VI-SPDAT score in the range for Permanent Supportive Housing.

Homeless individuals include individuals or families who do not have a fixed, sustainable or appropriate nighttime residence, meaning:

1. The primary nighttime residence is a public or private place not meant for human habitation
2. Is living in a shelter designated to provide temporary living (including homeless shelters, transitional housing, hotels paid for by charitable organization or government program)
3. Is being discharged from an institution, such as a residential treatment or similar facility, a behavioral health inpatient stay, physical health hospitalization, and they were admitted as homeless