

Updates re Criminal Justice Involved Members

Michal Rudnick

Project Manager

January 23, 2019



Topics

- Data & information re eligibility, enrollment, health conditions, Targeted Investments
- Reach-In
- Request from Maricopa & Pima County
- Inspiration!

Pre-release Medicaid Applications

- Approximately **10,711** inmate pre-release medical assistance applications submitted by corrections assistants in SFY2018.
- Of those pre-release applications, there was an approval rate of over 80%

Cost Avoidance

Inpatient Inmate Claims by County

Payment Dates: Between Jul 1, 2017 and Jun 30, 2018

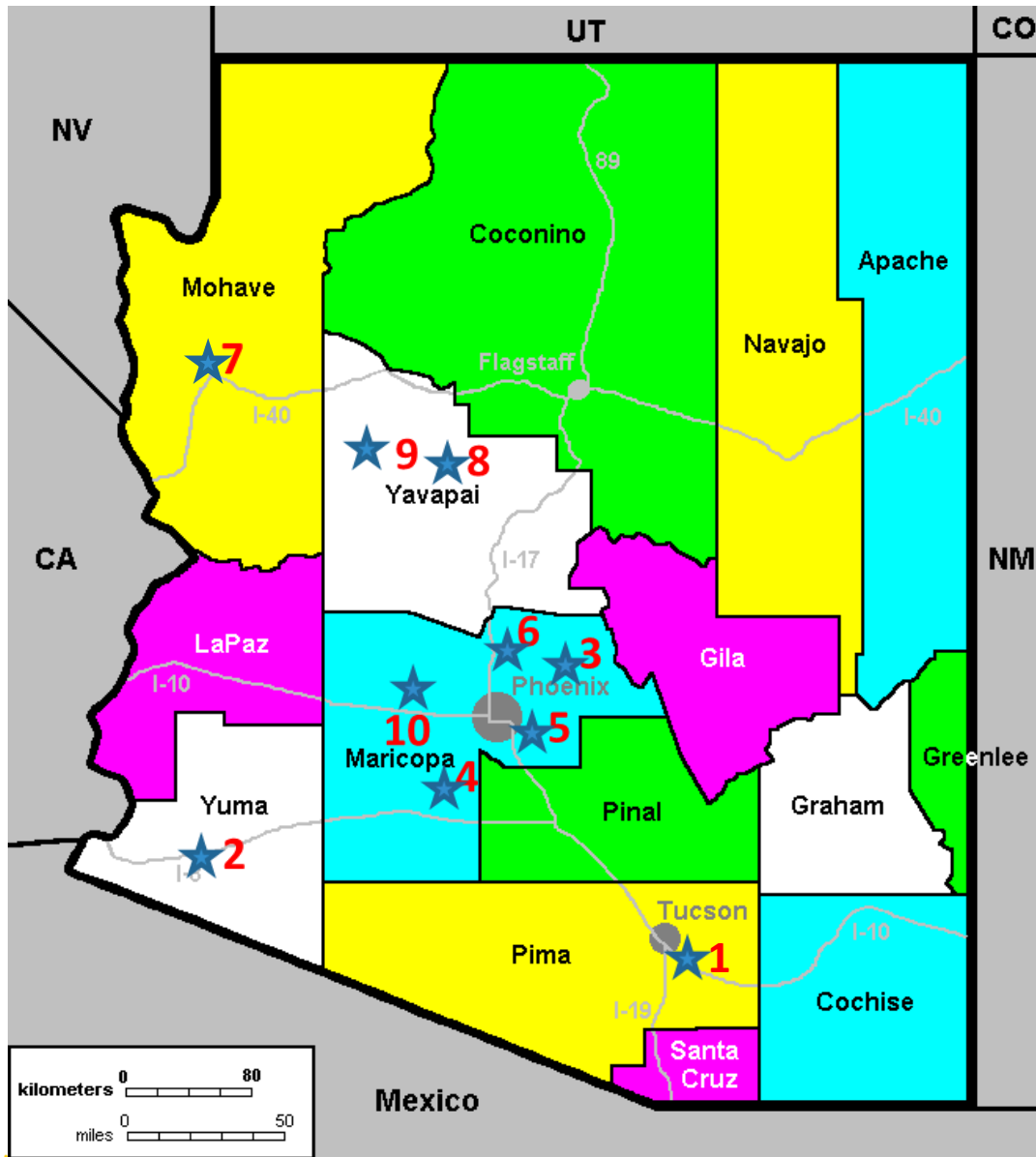
Criteria: 071, 093, 094, 095, 096, 097, 098, 099, 100, 101, 102, 103, 104, 105, 106, 107, 153



State Fiscal Year	Criteria Code Description	Distinct Member Count	Claim count	Paid Amount
2018	Arizona Department of Corrections	924	9,614	\$10,967,035.42
	Maricopa County Department of Corrections	355	2,864	\$2,025,091.90
	Pima County Department of Corrections	88	549	\$504,629.23
	Mohave County Department of Corrections	14	54	\$68,851.14
	Yuma County Department of Corrections	7	44	\$29,220.06
	Coconino County Department of Corrections	3	13	\$20,233.27
	Pinal County Department of Corrections	9	18	\$19,458.28
	Yavapai County Department of Corrections	4	10	\$10,274.12
	Cochise County Department of Corrections	2	11	\$5,366.10
	Graham County Department of Corrections	1	3	\$71.20
2018 - Summary		1,398	13179	\$13,650,230.72
Overall - Summary		1,398	13179	\$13,650,230.72
Aug 27, 2018		1		1:26:25 PM

In State Fiscal Year 2018

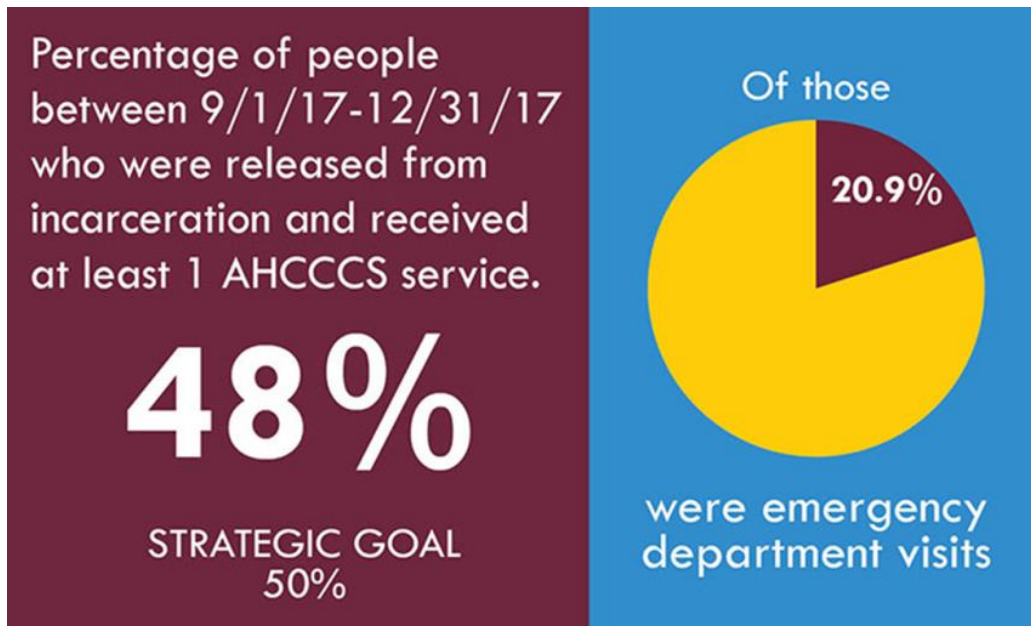
- Incarcerated member enrollment was suspended (*instead of terminated*) approximately 120,000 times.
- AHCCCS avoided **\$42,433,657.00** in capitation for incarcerated members



1. 1773 W. St. Mary's Rd, Suite 102, Tucson, 85745
2. 410 S. Maiden Lane, Yuma, AZ 85364
3. 801 S. 16th Street, Phoenix, AZ 85034
4. 460 North Mesa Drive #211 Mesa, AZ 85210 or 85201
5. 3864 N 27th Avenue, Phoenix, AZ 85017
6. 2445 W Indianola Ave, Phoenix, AZ 85015
7. 2215 Hualapai Mountain Road, Suite H & I, Kingman, AZ 86401
8. 452 W Finnie Flat Road, Camp Verde, AZ 86322
9. 651 W Mingus Avenue, Cottonwood, AZ 86326
10. 1111 S. Stapley Dr. Mesa
11. 6153 W. Olive Ave Glendale, AZ 85302
12. 1923 N Trekell Rd. Casa Grande, AZ 85122
13. 950 E Van Buren St, Avondale, AZ 85323

Access to Services

- AHCCCS Strategic Plan includes a measure to:
 - Increase access to a Medicaid service from 43% to 50% for members within 90 days of their release



ADC – Second Chance Reentry Centers

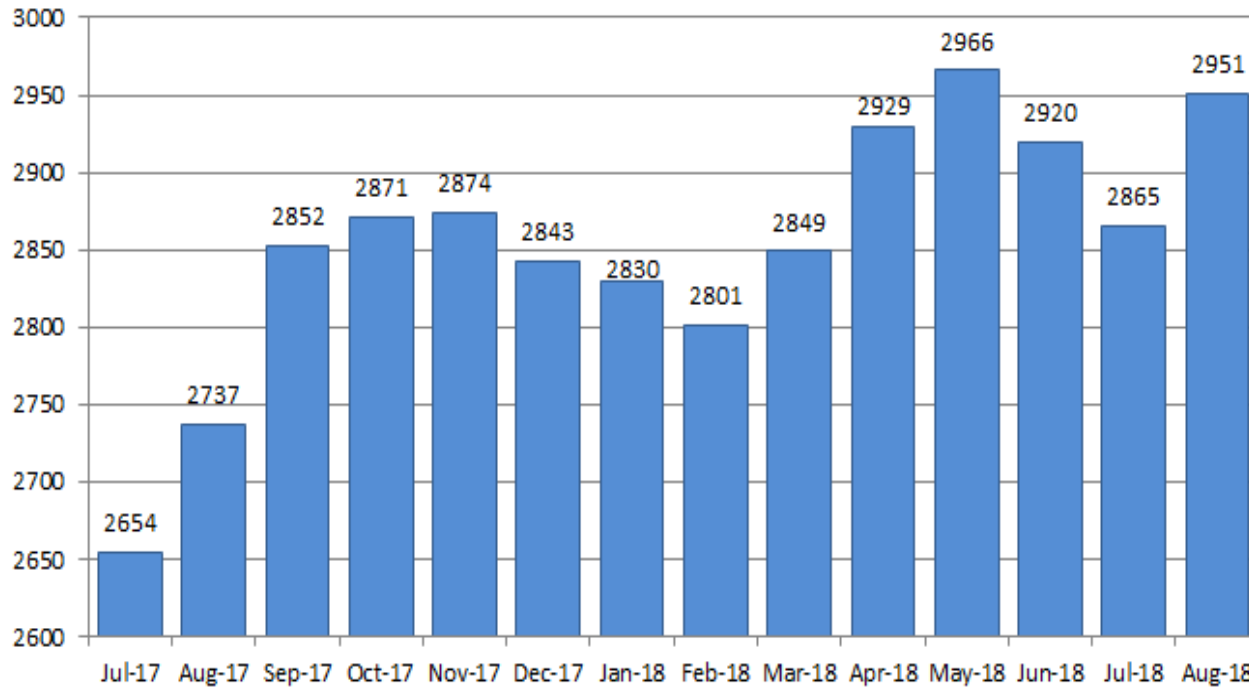
Prison / SCC Name	Lewis: Eagle Point Unit	Perryville: Piestewa Unit	Tucson: Manzanita Unit	Total
<i># Currently Participating</i>	257	52	45	354
<i># Completed</i>	1301	323	377	2,001
<i># Individuals Employed</i>	594	156	236	986
<i># Placements</i>	713	189	341	1,243

Data as of: 12/13/2018

Employment

AZ Department of Corrections

Employed Offenders FY 2018-19



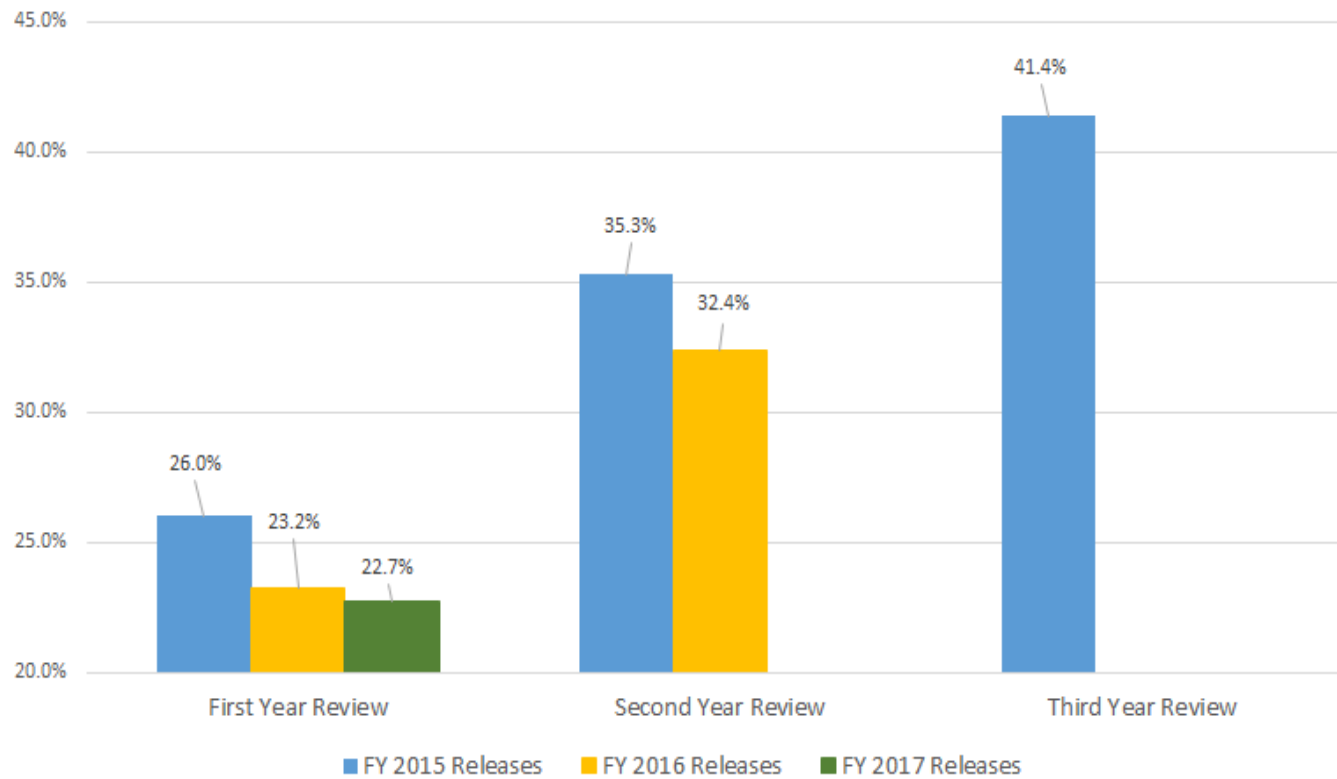
From DHS – Tobacco

- Partnership with ADC and ASHLine for follow up coaching of inmates after participation and release from the Second Chance Centers.
- Completed pilots at 2nd Chance facilities, with a reported **50% reduction in tobacco use**.
- Both the inmate population and ADC staff received the program with great enthusiasm.
- Two new pilots launching in January (both at Lewis), based on our review of the original pilots, which include a train-the-trainer model with select inmates.
- The initiative has **received rave reviews** from the TRUST Commission, which advises ADHS on the use of tobacco tax revenues.

Reduced Recidivism

AZ Department of Corrections

Recidivism Rates



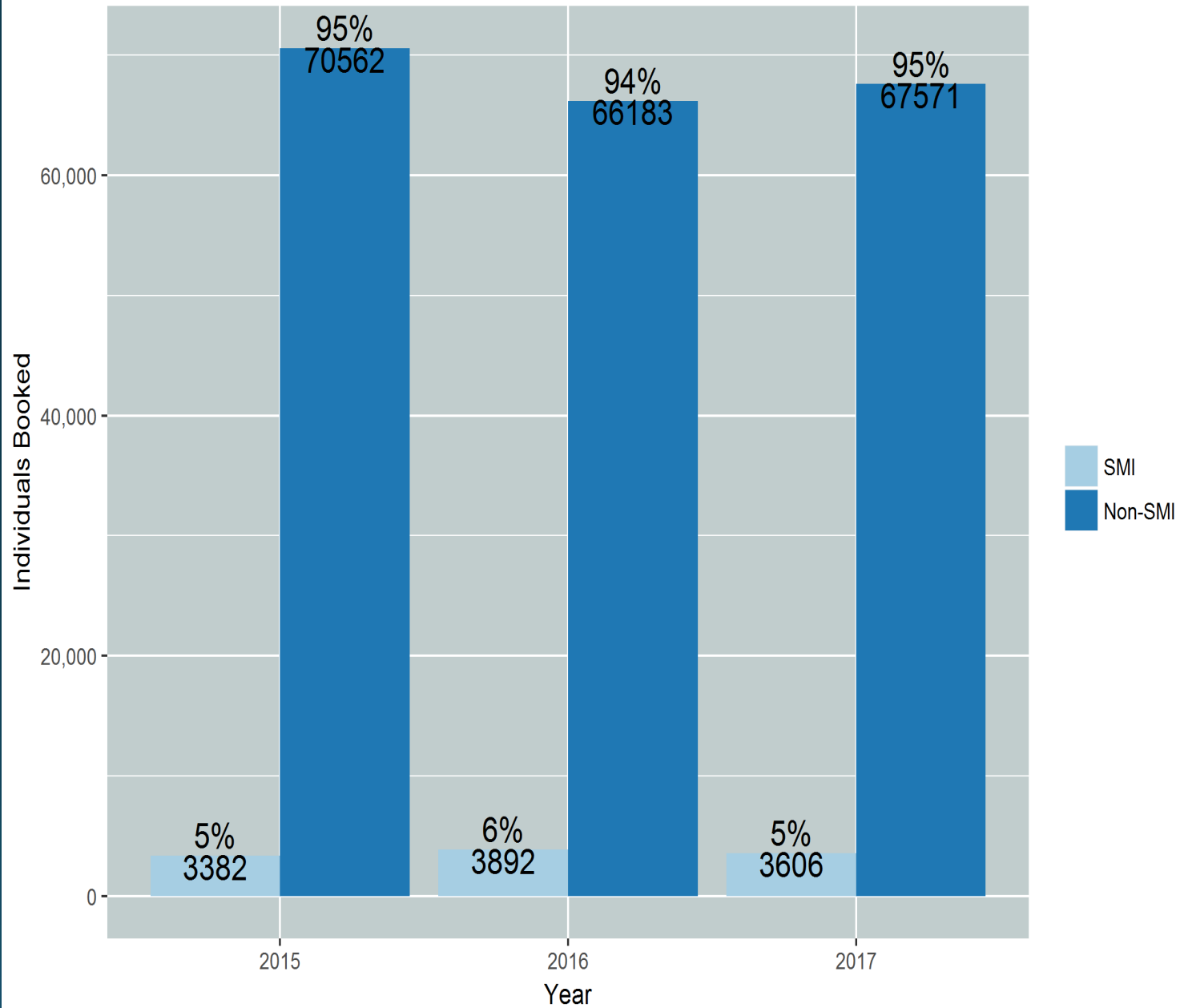
From MCSO:

Total population : 7,494 (5/18/18)

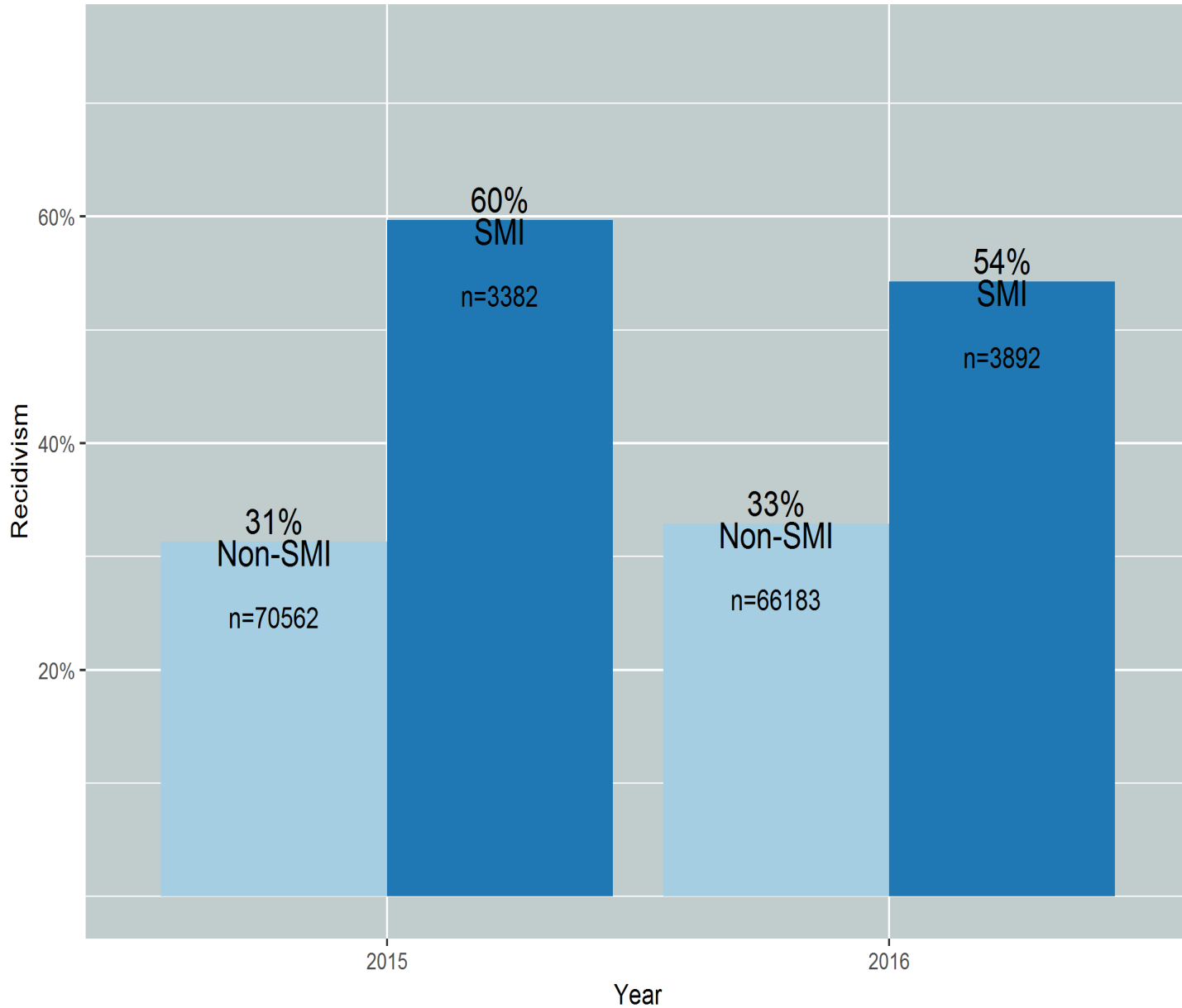
Our most vulnerable: Point in time:

- Hepatitis C- 507 (6.8%)
- Hypertension- 466 (6.2%)
- Heart Disease/Hyperlipidemia- 152 (2%)
- Diabetes- 168 (2.2%)
- SMI Active and Inactive- 621 (8.3%)
- **Mental Health Chronic Care- 1013 (13.5%)**
- COWS (opioid withdrawal)- 140 (1.9%) *
- CIWA (CIWA-A and CIWA-B) – 118 (1.6%)

MCSO Jail Unique SMI vs Non-SMI Individuals Booked



MCSO Jail Recidivism Rates for All Groups



Reach-In

- MCOs have quarterly Reach-In deliverables:
 - # of members incarcerated
 - # of members with complex health needs
 - # of members who received Reach-In care coordination
 - In person at jail/prison
 - Via video visitation
 - Via communication with probation/parole officer
- Since October 2016...
 - More than 5,000 high health risk individuals have been contacted pre-release to coordinate care with a community provider

Data Sharing Agreements

- Data addresses:
 - Protocols for optimizing use of services for MH and SUD Courts
 - Coordination of care for individuals with an SMI designation
 - “Reach-in” - Coordination of Care for releasing members
- Data collected includes at a minimum: name, DOB, AHCCCS ID, SSN, Gender, COT status, Public Fiduciary/guardian status, Assigned provider(s), name of ACC plan, PCP name & #, diagnosis, medications

Feedback & Request from Maricopa & Pima

- Justice Liaisons have been WONDERFUL to work with (several mentioned by name)
- Request contact information of attorney's with the health plans that can work with them to finalize data agreements (completed with Mercy Care and AZCH)
- Pima offers a tool for sharing CJ data for care coordination

Message from a probationer:

...I am 31 years old. I have spent ***most of my adult life in and out of jail*** and prison. I have a ***long history of drug use*** and used to believe I would ***do drugs for the rest of my life***. I ***cared about nothing*** else including ***my children***, who are now 12 and 3.

Up until my last incarceration in the county jail (2017), I had *never even considered rehab*, because I *didn't believe I had a problem*. When the chance of going was given to me through the Reach Out program, I *decided to try it*. That was the *best decision of my life*.

I entered CROSSROADS for women on Sept.13, 2017 and that *day changed my life forever. I am so grateful* that I learned things about myself that I had never known, things that kept me “sick”. Things that kept me going back to drugs. I dealt with those things in treatment and *I was given the tools to change my thinking* and to *remain clean and sober.*

I completed the typically 30 day program in 110 days and have remained sober and clean for 19 months. Because of the Reach Out program, I am now living a life with purpose. I am on my way to successfully *completing probation* for the *very first time ever*. I have my *certification as a Peer Support Specialist* and my hope is to be able to *one day give back by "reaching out"* to our *at risk youth*.

I now *have relationships with my daughters* and family. I *did the work* and continue to *do so everyday*, but I wouldn't have been able without the Reach Out program. It and places like Crossroads are *saving lives* since without them I would be dead or in prison. I hope that they *continue to reach out* because sometimes that's *all someone needs*, somebody to *reach out and show them another way*. I am *forever grateful*, thank you!

Resources

- AHCCCS Website:

<https://www.azahcccs.gov/AHCCCS/Initiatives/CareCoordination/justiceinitiatives.html>; templates on this page that address:

- Enrollment Suspense/Reinstatement IGA
- Technical Requirements for Enrollment Suspense Agreement
- Hospitalization IGA

- AHCCCS Contracts with Health Plans Describing Reentry:

https://www.azahcccs.gov/Resources/Downloads/ContractAmendments/ACC/ACC_Contract_Amend_1.pdf

Thank you!

