

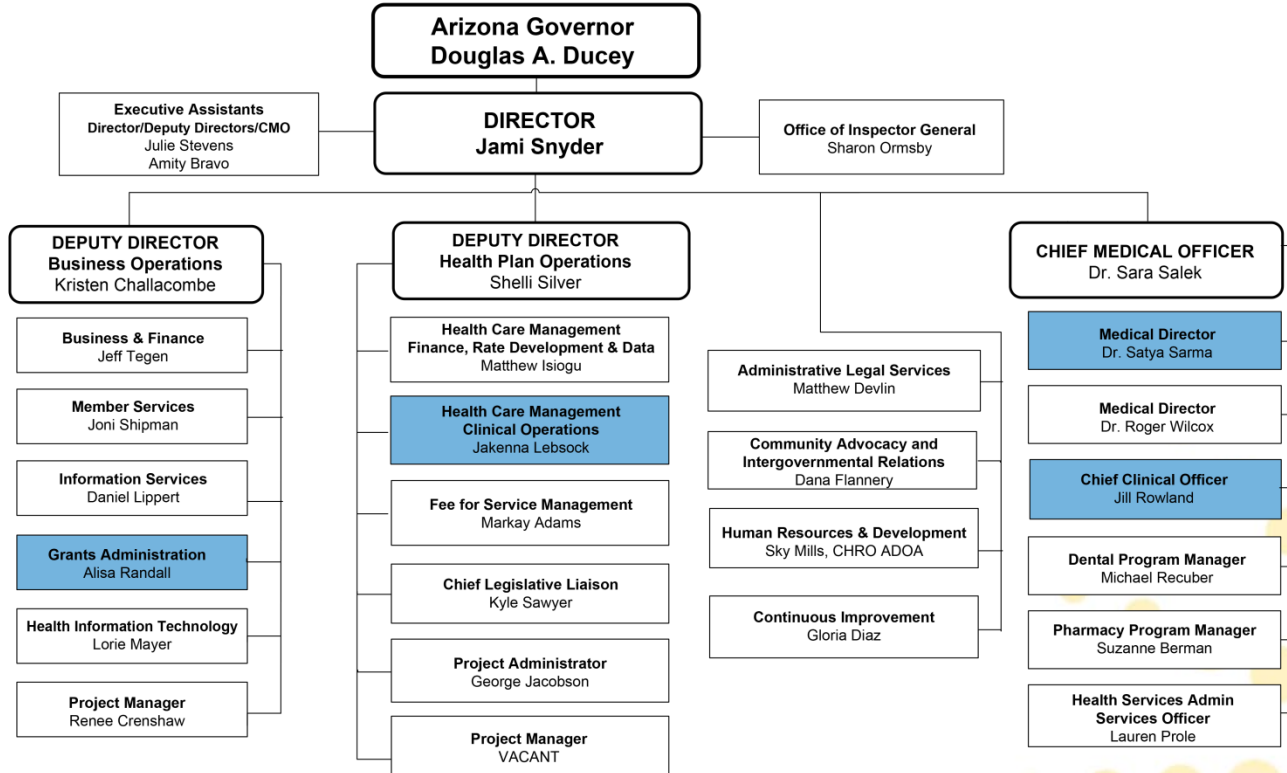


# AHCCCS Update



# AHCCCS Organizational Structure

## Updated: Fall 2019



# Regulatory Update

---

- Guidance: SUPPORT Act's State Plan Amendment Option for SUD Services in IMDs (11/6/19)
- Guidance: Current and Planned Managed Care Contract Approval Process Improvements (11/8/19)
- Notice of Proposed Rulemaking: Medicaid Fiscal Accountability (11/12/19)

# RBHA Services - Post 10/1/21

## Competitive Contract Expansion

---

- Naming convention: AHCCCS Complete Care Plan with a Regional Behavioral Health Agreement (ACC-RBHA)
- Will expand the provision of services for **one** ACC plan in each GSA (only ACC Plans currently serving in a given GSA eligible to compete)
- Members determined to have an SMI will have the option to opt-out of receiving physical health services through their single ACC Plan
- Effective 7/1/21, AHCCCS will directly administer SABG funding used for prevention services
- ACC-RBHAs will provide the full continuum of crisis services to all individuals within their awarded GSA, including mobile crisis teams and crisis stabilization services
- ACC-RBHAs will be required to jointly select, contract with, and oversee a single, statewide crisis phone vendor
- Members currently served by AIHP and RBHA will be transitioned to AIHP and will continue to have ongoing choice

# Abuse and Neglect Task Force

- Report issued on 11/1/19 (<https://azahcccs.gov/AHCCCS/Downloads/AbuseAndNeglectPreventionTaskForceReport2019.pdf>)
- Recommendation themes

Statewide Public Awareness Campaign	Workforce Development
Prevention and Accountability	Adult Protective Services Registry and Training
Multi-Agency Coordination	Supportive Resources to Help Manage Caregiver Stress
Signage	Public Access to Setting Monitoring Reports
Training for Vulnerable Individuals and Families	Review of Confidentiality Requirements
Identification, Tracking, and Analysis of Incidents	Review of Status and Results of Recommendations

# 2019 State Medicaid Operations Survey

## Directors' Strategic Priorities

