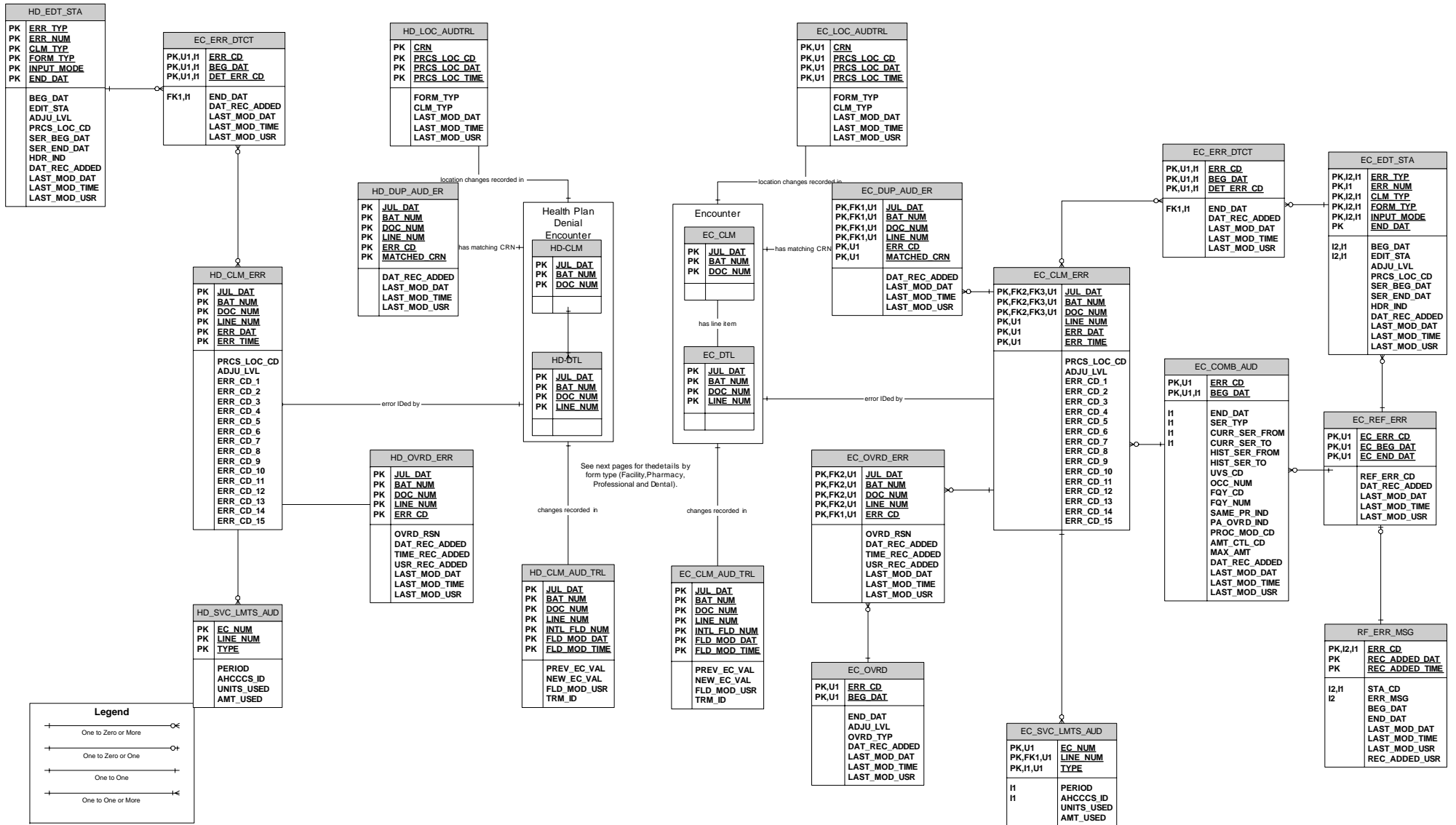
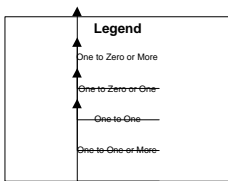
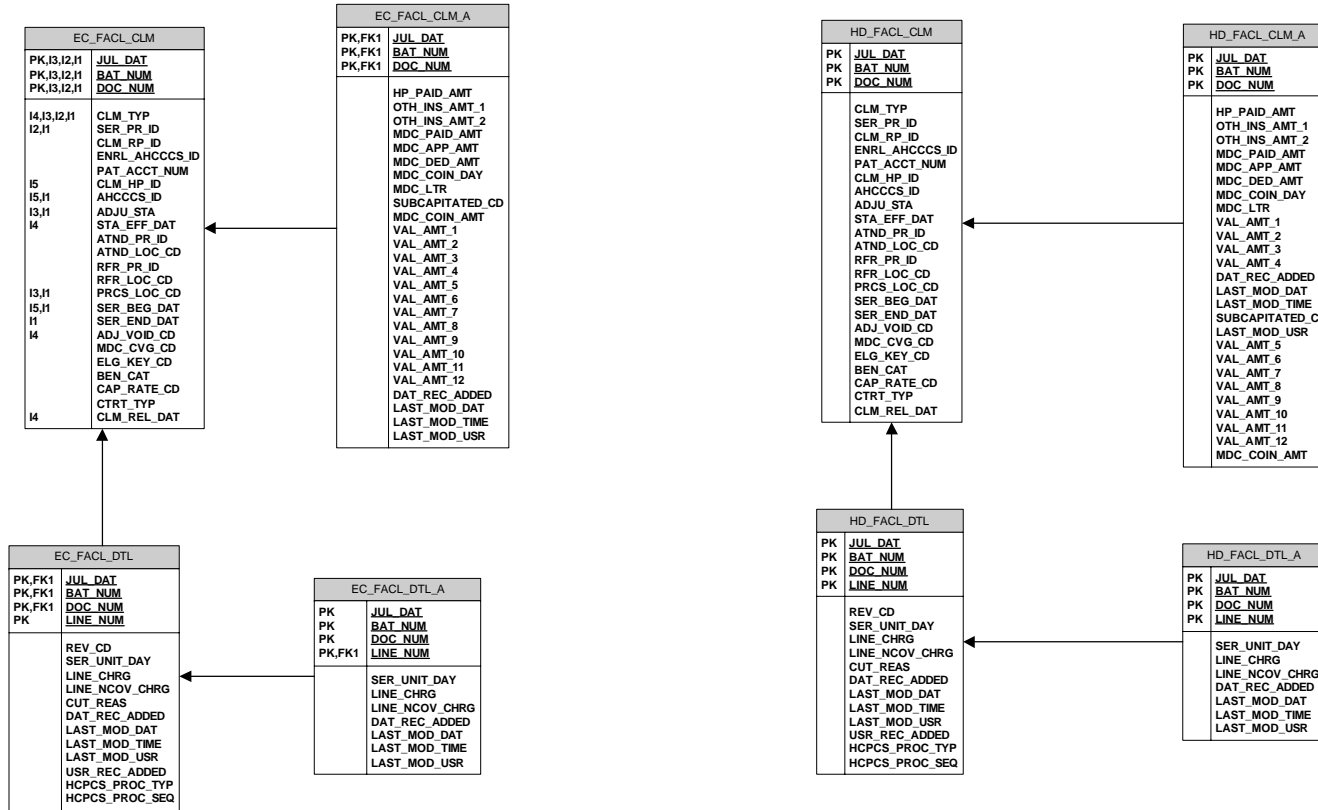


PMMIS Data Model Encounters Subsystem



PMMIS Data Model Encounters Subsystem Facility Detail



PMMIS Data Model Encounters Subsystem Pharmacy Detail

EC_DRUG_CLM	
PK,I3,I2,I1 PK,I3,I2,I1 PK,I3,I2,I1	JUL_DAT BAT_NUM DOC_NUM
11 13,I2,I1 I2,I1	INPUT_MODE FORM_TYP CLM_TYP SER_PR_ID SER_PR_LOC_CD BIL_PR_ID BIL_PR_LOC_CD BIL_DAT TP_SUPPL_ID SIG_IND CLM_HP_ID CLM_HP_SEX CLM_HP_DOB ENRL_AHCCCS_ID PAT_ACCT_NUM CLM_HP_ID CLM_HP_LOC_CD FORCE_PND_CD ATCH_IND OTH_CVG_IND AHCCCS_ID DNL_REAS CCL_PND_LVL CCL_OUTPUT_FMT EC_CMT PR_TYP NEGO_STL_CD INVC_NUM PLACE_OF_SER_CD PSCR_PR_ID PSCR_LOC_CD HDR_FRZN DAT_REC_ADDED LAST_MOD_DAT LAST_MOD_TIME LAST_MOD_USR MHS_IND

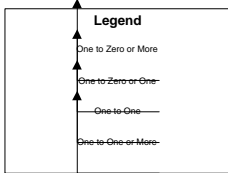
EC_DRUG_DTL	
PK,FK1 PK,FK1 PK,FK1 PK,I2	JUL_DAT BAT_NUM DOC_NUM LINE_NUM
I3	PSCR_DAT NDC_DRUG NDC_STRENGTH ITM_QTY SUPL_DAY BRN_RQST_IND NUM_REFL_AUTH NUM_REFL_ACT BIL_AMT OTH_CVG_PMT_AMT MDC_PAID_AMT HP_PAID_AMT DISP_FEE SER_MAN_PRCS_CD RP_MAN_PRCS_CD PR_MAN_PRCS_CD PND_MAN_PRCS_CD MAN_PRC_CD DNL_REAS RX_NUM MDC_APP_AMT MDC_DED_AMT MDC_COIN_AMT VEND_PD_NUM ALLOW_AMT REIM_AMT CLM_SOFC_APPL RI_DED_APPL_AMT
13,I2 11	ADJU_STA STA_EFF_DAT ADJ_VOID_REAS ADJ_VOID_CD PRR_CRN CCL_NUM CCL_OUTPUT_FMT PA_RI_DL_NUM CCL_PND_LVL PRCS_LOC_CD ADJU_LVL DISP_DAT CLM_COS
11	CLN_CLM_DAT MDC_CVG_CD THP_CLS DEA_ID DAT_REC_ADDED LAST_MOD_DAT LAST_MOD_TIME LAST_MOD_USR CC_RI_AMT DL_TYP_CD TPL_IND ELG_KEY_CD BEN_CAT CAP_RATE_CD PAY_1_CD PAY_1_PCT PAY_2_CD PAY_2_PCT PAY_3_CD PAY_3_PCT CTRT_TYP IHS_CD LTC_CD CATEG_IND CRS_IND RCP_EXCP_CD CLM_REL_DAT PRCS_LOC_DAT IHS_RFRL_IND EMG_SVC_IND RETRO_ELG USR_REC_ADDED CLM_TYP MHS_IND
11,I3,I2 I3	AHCCCS_ID PAY_CHASE_CD MED_DOC_IND

EC_DRUG_DTL_A	
PK,FK1 PK,FK1 PK,FK1 PK,FK1	JUL_DAT BAT_NUM DOC_NUM LINE_NUM
	ITM_QTY BIL_AMT OTH_CVG_PMT_AMT MDC_PAID_AMT HP_PAID_AMT MDC_APP_AMT MDC_DED_AMT DAT_REC_ADDED LAST_MOD_DAT LAST_MOD_TIME SUBCAPITATED_CD LAST_MOD_USR

HD_DRUG_CLM	
PK PK PK	JUL_DAT BAT_NUM DOC_NUM
	INPUT_MODE FORM_TYP CLM_TYP SER_PR_ID SER_PR_LOC_CD BIL_PR_ID BIL_DAT TP_SUPPL_ID SIG_IND CLM_HP_ID CLM_HP_SEX CLM_HP_DOB ENRL_AHCCCS_ID PAT_ACCT_NUM CLM_HP_ID CLM_HP_LOC_CD FORCE_PND_CD ATCH_IND OTH_CVG_IND AHCCCS_ID DNL_REAS CCL_PND_LVL CCL_OUTPUT_FMT EC_CMT PR_TYP NEGO_STL_CD INVC_NUM PLACE_OF_SER_CD PSCR_PR_ID PSCR_LOC_CD HDR_FRZN DAT_REC_ADDED LAST_MOD_DAT LAST_MOD_TIME LAST_MOD_USR MHS_IND

HD_DRUG_DTL_A	
PK PK PK PK	JUL_DAT BAT_NUM DOC_NUM LINE_NUM
	ITM_QTY BIL_AMT OTH_CVG_PMT_AMT MDC_PAID_AMT HP_PAID_AMT MDC_APP_AMT MDC_DED_AMT DAT_REC_ADDED LAST_MOD_DAT LAST_MOD_TIME SUBCAPITATED_CD LAST_MOD_USR

HD_DRUG_DTL	
PK PK PK PK	JUL_DAT BAT_NUM DOC_NUM LINE_NUM
	PSCR_DAT NDC_DRUG NDC_STRENGTH ITM_QTY SUPL_DAY BRN_RQST_IND NUM_REFL_AUTH NUM_REFL_ACT BIL_AMT OTH_CVG_PMT_AMT MDC_PAID_AMT HP_PAID_AMT DISP_FEE SER_MAN_PRCS_CD RP_MAN_PRCS_CD PR_MAN_PRCS_CD PND_MAN_PRCS_CD MAN_PRC_CD DNL_REAS RX_NUM MDC_APP_AMT MDC_DED_AMT MDC_COIN_AMT VEND_PD_NUM ALLOW_AMT REIM_AMT CLM_SOFC_APPL RI_DED_APPL_AMT ADJU_STA STA_EFF_DAT ADJ_VOID_REAS ADJ_VOID_CD PRR_CRN CCL_NUM CCL_OUTPUT_FMT PA_RI_DL_NUM CCL_PND_LVL PRCS_LOC_CD ADJU_LVL DISP_DAT CLM_COS CLN_CLM_DAT MDC_CVG_CD THP_CLS DEA_ID DAT_REC_ADDED LAST_MOD_DAT LAST_MOD_TIME LAST_MOD_USR CC_RI_AMT DL_TYP_CD TPL_IND ELG_KEY_CD BEN_CAT CAP_RATE_CD PAY_1_CD PAY_1_PCT PAY_2_CD PAY_2_PCT PAY_3_CD PAY_3_PCT CTR_TYP IHS_CD LTC_CD CATEG_IND CRS_IND RCP_EXCP_CD CLM_REL_DAT PRCS_LOC_DAT IHS_RFRL_IND EMG_SVC_IND RETRO_ELG USR_REC_ADDED CLM_TYP MHS_IND AHCCCS_ID PAY_CHASE_CD MED_DOC_IND



PMMIS Data Model Encounters Subsystem Professional Detail

EC_MED_CLM	
PK,13,12,11	JUL_DAT
PK,13,12,11	BAT_NUM
PK,13,12,11	DOC_NUM
11	INPUT_MODE
11	FORM_TYP
13,12,11	CLM_TYP
12,11	SER_PR_ID
	SER_PR_LOC_CD
	BIL_PR_ID
	BIL_PR_LOC_CD
	BIL_DAT
	TP_SUPPL_ID
	SIG_IND
	CLM_RP_ID
	CLM_RP_SEX
	CLM_RP_DOB
	ENRL_AHCCCS_ID
	PAT_ACCT_NUM
	CLM_HP_ID
13	CLM_HP_LOC_CD
	FORCE_PND_CD
	ATCH_IND
	OTH_CVG_IND
13,11	AHCCCS_ID
	DNL_REAS
	CCL_PND_LVL
	CCL_OUTPUT_FMT
	EC_CMT
	PR_TYP
	NEGO_STL_CD
	RFRL_CD
	DCHRG_DAT
	ADM_DAT
	RFR_PR_ID
	RFR_LOC_CD
	FACL_PR_ID
	FACL_LOC_CD
	EMPT_IND
	ACCI_CAR_IND
	ACCI_OTHR_IND
	LABRY_IND
	LABRY_FEE
	MED_PAT_STA
	STRL_IND
	INVC_NUM
	HDR_FRZN
	DAT_REC_ADDED
	LAST_MOD_DAT
	LAST_MOD_TIME
	LAST_MOD_USR
11	MHS_IND

EC_MED_DTL	
PK,FK1	JUL_DAT
PK,FK1	BAT_NUM
PK,FK1	DOC_NUM
PK,12	LINE_NUM
	PA_RI_DL_NUM
	PND_MAN_PCS_CD
	PR_MAN_PRCS_CD
	RP_MAN_PRCS_CD
	SER_MAN_PRCS_CD
	EMG_SVC_IND
	HP_PAID_AMT
	MDC_PAID_AMT
	OTH_CVG_PMT_AMT
	BIL_AMT
	EPSDT_TYP
	PLACE_OF_SER_CD
	COB_CD
13	HCPCS_PROC_TYP
13	HCPCS_PROC_SEQ
13	HCPCS_PROC_MOD
	SER_BEG_DAT
	SER_END_DAT
	SER_UNIT
13,12	ADJU_STA
11	STA_EFF_DAT
	ADJ_VOID_REAS
	PRR_CRN
	MAN_PRC_CD
	DNL_REAS
12	PRCS_LOC_CD
	ADJU_LVL
	CCL_NUM
	CCL_OUTPUT_FMT
	ALLOW_AMT
	REIM_AMT
	RI_DED_APPL_AMT
	CLM_SOFT_APPL
	FAM_PLN_IND
	ADJ_VOID_CD
	MDC_APP_AMT
	MDC_DED_AMT
	MDC_COIN_AMT
	VEND_PD_NUM
	CCL_PND_LVL
	PRI_DIAG_CD
	SEC_DIAG_CD
	CLM_COS
	MDC_CVG_CD
	DAT_REC_ADDED
	LAST_MOD_DAT
	LAST_MOD_TIME
	LAST_MOD_USR
	CC_RI_AMT
	DL_TYP_CD
	TPL_IND
	ELG_KEY_CD
	BEN_CAT
	CAP_RATE_CD
	IHS_RFRL_IND
	PAY_1_CD
	PAY_1_PCT
	PAY_2_CD
	PAY_2_PCT
	PAY_3_CD
	PAY_3_PCT
	CLM_CLM_DAT
	CTR_TYP
	IHS_CD
	LTC_CD
	CATEG_IND
	CRS_IND
	RCP_EXCP_CD
11	CLM_REL_DAT
	PRCS_LOC_DAT
	RETRO_ELG
	USR_REC_ADDED
13,12,11	CLM_TYP
	PROG_CLS_CD
13	MHS_IND
	AHCCCS_ID
	PAY_CHASE_CD
	MED_DOC_IND

EC_MED_CLM_A	
PK,FK1	JUL_DAT
PK,FK1	BAT_NUM
PK,FK1	DOC_NUM
	LABRY_FEE
	DAT_REC_ADDED
	LAST_MOD_DAT
	LAST_MOD_TIME
	LAST_MOD_USR

EC_MED_DTL_A	
PK,FK1	JUL_DAT
PK,FK1	BAT_NUM
PK,FK1	DOC_NUM
PK,FK1	LINE_NUM
	HP_PAID_AMT
	MDC_PAID_AMT
	BIL_AMT
	OTH_CVG_PMT_AMT
	MDC_APP_AMT
	MDC_DED_AMT
	SER_UNIT
	DAT_REC_ADDED
	LAST_MOD_DAT
	LAST_MOD_TIME
	SUBCAPITATED_CD
	LAST_MOD_USR

EC_MED_DTL2	
PK,FK1,U1	JUL_DAT
PK,FK1,U1	BAT_NUM
PK,FK1,U1	DOC_NUM
PK,FK1,U1	LINE_NUM
	OTH_DIAG_CD_1
	OTH_DIAG_CD_2
	HCPCS_PROC_MOD2
	FILLER
	ONSET_DAT

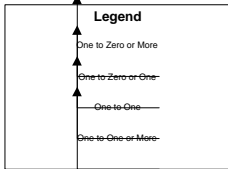
HD_MED_CLM	
PK	JUL_DAT
PK	BAT_NUM
PK	DOC_NUM
	INPUT_MODE
	FORM_TYP
	CLM_TYP
	SER_PR_ID
	SER_PR_LOC_CD
	BIL_PR_ID
	BIL_PR_LOC_CD
	BIL_DAT
	TP_SUPPL_ID
	SIG_IND
	CLM_RP_ID
	CLM_RP_SEX
	CLM_RP_DOB
	ENRL_AHCCCS_ID
	PAT_ACCT_NUM
	CLM_HP_ID
	CLM_HP_LOC_CD
	FORCE_PND_CD
	ATCH_IND
	OTH_CVG_IND
	AHCCCS_ID
	DNL_REAS
	CCL_PND_LVL
	CCL_OUTPUT_FMT
	EC_CMT
	PR_TYP
	NEGO_STL_CD
	RFRL_CD
	DCHRG_DAT
	ADM_DAT
	RFR_PR_ID
	RFR_LOC_CD
	FACL_PR_ID
	FACL_LOC_CD
	EMPT_IND
	ACCI_CAR_IND
	ACCI_OTHR_IND
	LABRY_IND
	LABRY_FEE
	MED_PAT_STA
	STRL_IND
	INVC_NUM
	HDR_FRZN
	DAT_REC_ADDED
	LAST_MOD_DAT
	LAST_MOD_TIME
	LAST_MOD_USR
	MHS_IND

HD_MED_CLM_A	
PK	JUL_DAT
PK	BAT_NUM
PK	DOC_NUM
	LABRY_FEE
	DAT_REC_ADDED
	LAST_MOD_DAT
	LAST_MOD_TIME
	LAST_MOD_USR

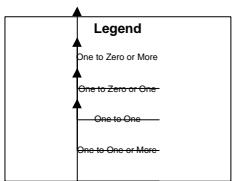
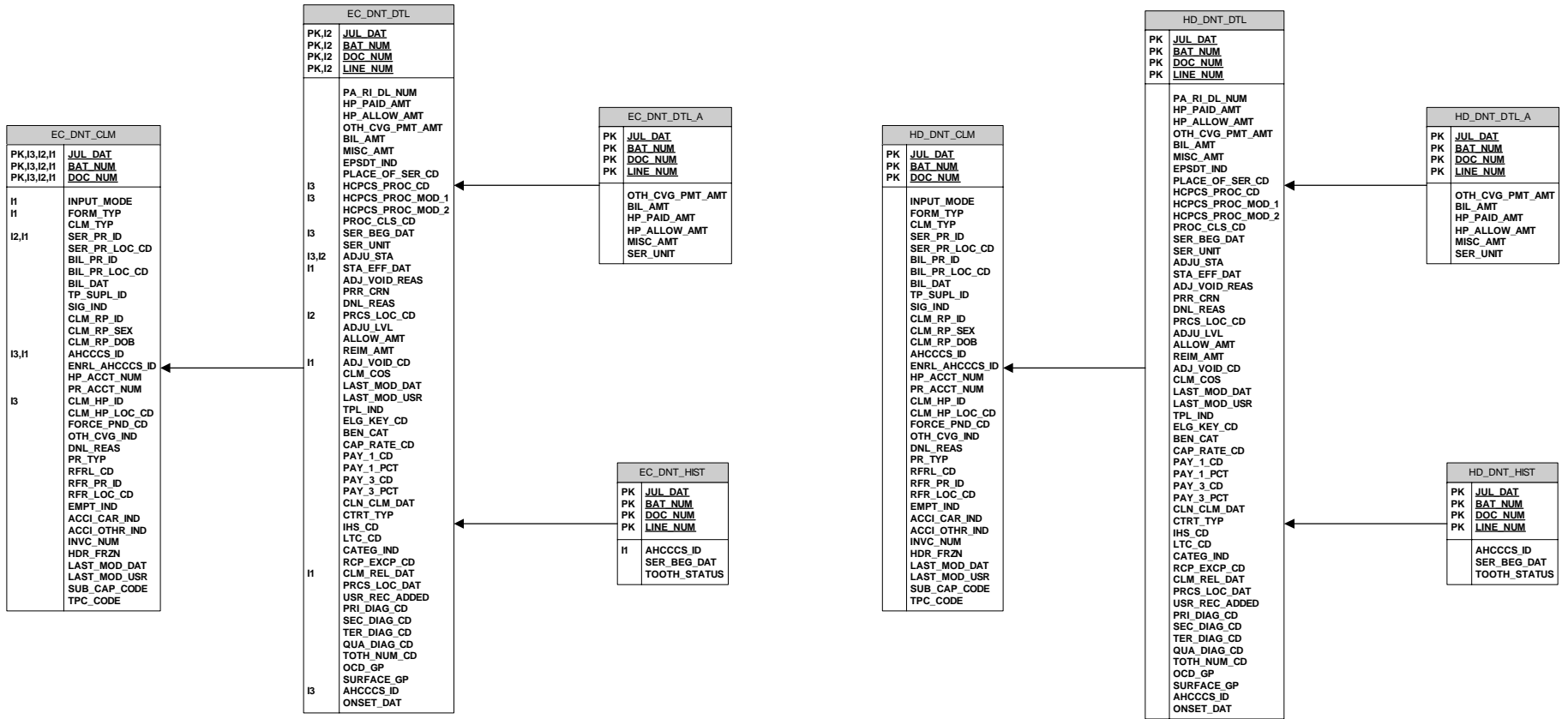
HD_MED_DTL	
PK	JUL_DAT
PK	BAT_NUM
PK	DOC_NUM
PK	LINE_NUM
	PA_RI_DL_NUM
	PND_MAN_PCS_CD
	PR_MAN_PRCS_CD
	RP_MAN_PRCS_CD
	SER_MAN_PRCS_CD
	EMG_SVC_IND
	HP_PAID_AMT
	MDC_PAID_AMT
	OTH_CVG_PMT_AMT
	BIL_AMT
	EPSDT_TYP
	PLACE_OF_SER_CD
	COB_CD
	HCPCS_PROC_TYP
	HCPCS_PROC_SEQ
	HCPCS_PROC_MOD
	SER_BEG_DAT
	SER_END_DAT
	SER_UNIT
	ADJU_STA
	STA_EFF_DAT
	ADJ_VOID_REAS
	PRR_CRN
	MAN_PRC_CD
	DNL_REAS
	PRCS_LOC_CD
	ADJU_LVL
	CCL_NUM
	CCL_OUTPUT_FMT
	ALLOW_AMT
	REIM_AMT
	RI_DED_APPL_AMT
	CLM_SOFT_APPL
	FAM_PLN_IND
	ADJ_VOID_CD
	MDC_APP_AMT
	MDC_DED_AMT
	MDC_COIN_AMT
	VEND_PD_NUM
	CCL_PND_LVL
	PRI_DIAG_CD
	SEC_DIAG_CD
	CLM_COS
	MDC_CVG_CD
	DAT_REC_ADDED
	LAST_MOD_DAT
	LAST_MOD_TIME
	LAST_MOD_USR
	CC_RI_AMT
	DL_TYP_CD
	TPL_IND
	ELG_KEY_CD
	BEN_CAT
	CAP_RATE_CD
	IHS_RFRL_IND
	PAY_1_CD
	PAY_1_PCT
	PAY_2_CD
	PAY_2_PCT
	PAY_3_CD
	PAY_3_PCT
	CLM_CLM_DAT
	CTR_TYP
	IHS_CD
	LTC_CD
	CATEG_IND
	CRS_IND
	RCP_EXCP_CD
	CLM_REL_DAT
	PRCS_LOC_DAT
	RETRO_ELG
	USR_REC_ADDED
	CLM_TYP
	PROG_CLS_CD
	MHS_IND
	AHCCCS_ID
	PAY_CHASE_CD
	MED_DOC_IND

HD_MED_DTL_A	
PK	JUL_DAT
PK	BAT_NUM
PK	DOC_NUM
PK	LINE_NUM
	HP_PAID_AMT
	MDC_PAID_AMT
	BIL_AMT
	OTH_CVG_PMT_AMT
	MDC_APP_AMT
	MDC_DED_AMT
	SER_UNIT
	DAT_REC_ADDED
	LAST_MOD_DAT
	LAST_MOD_TIME
	SUBCAPITATED_CD
	LAST_MOD_USR

HD_MED_DTL2	
PK	JUL_DAT
PK	BAT_NUM
PK	DOC_NUM
PK	LINE_NUM
	OTH_DIAG_CD_1
	OTH_DIAG_CD_2
	HCPCS_PROC_MOD2
	FILLER
	ONSET_DAT



PMMIS Data Model Encounters Subsystem Dental Detail



EC_NEGO_STL	
PK,U1	PR_ID
PK,U1	PR_LOC_CD
PK,U1	STL_NUM
	LIMIT
	AMT_TO_DAT
	PCT_BIL_CHRG
	PCT_CAP_FEE
	EFF_BEG_DAT
	EFF_END_DAT
	REC_ADDED_DAT
	LAST_MOD_TIME
	LAST_MOD_USR

EC_NCAT_DED	
PK,U1	EC_NUM
PK,U1	SER_PR_ID
PK,U1	CHK_DAT
	DED_AMT
	DED_PCT
	ELG_KEY_CD
	ADJU_STA

RF_ERR_MSG	
PK,I2,I1	ERR_CD
PK	REC_ADDED_DAT
PK	REC_ADDED_TIME
	STA_CD
	ERR_MSG
	BEG_DAT
	END_DAT
	LAST_MOD_TIME
	LAST_MOD_USR
	REC_ADDED_USR

EC_TSN_DEM_ID	
PK,U1	TSN_ID
	TSN_NAME
	EFF_FROM_DAT
	EFF_TO_DAT
	TSN_CLM_AUTH
	DAT_REC_ADDED
	LAST_MOD_TIME
	LAST_MOD_USR

EC_SER_STAT	
PK	SER_YR
PK	SER_MO
PK	INPUT_MODE
PK	FORM_TYP
PK	PR_MOD_NDC

EC_RETRO_AUDIT	
PK,I1,U1	JUL_DAT
PK,I1,U1	BAT_NUM
PK,I1,U1	DOC_NUM
PK,I1,U1	CASE_NO
PK,I1,U1	SEQ
	CASE_TYPE
	CONTRACT_TYPE
	PERIOD_BEGIN
	PERIOD_END
	PERIOD_DAYS
	PERCENT_APPLIED
	HP_PAID_AMT
	REC_ADDED_DAT
	REC_ADDED_TIME
	REC_ADDED_USR

EC_REMI_ADV	
PK	CLM_TYP
PK	PAYEE
PK	CASE_NUM
PK	TYP_DT
PK	ORIG_CRN
PK	INV_AHCCCS_DOS
PK	LOC_CD
	SER_PR_ID
	AHCCCS_ID
	FAT_ACCT_NUM
	JUL_DAT
	BAT_NUM
	DOC_NUM
	LINE_NUM
	PROC_CODE_NDC
	FROM_DOS
	RI_UB_1_CNT
	RI_UB_0_CNT
	RI_1500_CNT
	RI_FC_CNT
	DL_UB82_CNT
	DL_UB_1_CNT
	DL_UB_0_CNT
	DL_FC_CNT
	ENC_UB82_CNT
	ENC_UB_1_CNT
	ENC_UB_0_CNT
	ENC_1500_CNT
	ENC_FC_CNT
	QMB_UB2_CNT
	QMB_UB_1_CNT
	QMB_UB_0_CNT
	QMB_1500_CNT
	QMB_FC_CNT

EC_PREV_DAY_LOC	
PK,U1	PRCS_LOC_CD
PK,U1	PREV_RUN_DAT
PK,U1	CLM_TYP
	FFS_UB82_CNT
	FFS_UB_1_CNT
	FFS_UB_1_CNT
	FFS_1500_CNT
	FFS_FC_CNT
	RI_UB82_CNT
	RI_UB_1_CNT
	RI_UB_0_CNT
	RI_1500_CNT
	RI_FC_CNT
	DL_UB82_CNT
	DL_UB_1_CNT
	DL_UB_0_CNT
	DL_FC_CNT
	ENC_UB82_CNT
	ENC_UB_1_CNT
	ENC_UB_0_CNT
	ENC_1500_CNT
	ENC_FC_CNT

EC_PRCS_PARM	
PK,I1	PARM_ID
PK	PARM_SEQ
PK	CRN_DAT
PK	BEG_DAT
	END_DAT
	PARM_TYP
	PARM_AMT
	PARM_PCT
	PARM_VAL1
	PARM_VAL2
	PARM_DAT
	REC_ADDED_DAT
	LAST_MOD_DAT

EC_PR_STAT	
PK	PR_YR
PK	PR_MO
PK	SER_PR_ID
PK	SER_LOC_CD
PK	ELG_CAT
PK	MDC_CVG_IND
PK	CLM_COS
	UNIT_ALLOW_AMT
	BIL_CHRG
	MDC_PAID_AMT
	OTH_CVG_PMT_AMT
	REIM_AMT
	DAT_REC_ADDED
	LAST_MOD_TIME

EC_PLN_STAT	
PK	PLN_YR
PK	PLN_MO
PK	HP_ID
PK	CTY_SER_AREA_CD
PK	CAP_RATE_CD
PK	CLM_COS
	UNIT_ALLOW_AMT
	BIL_CHRG
	MDC_PAID_AMT
	OTH_CVG_PMT_AMT
	REIM_AMT
	DAT_REC_ADDED
	LAST_MOD_TIME

EC_PA_TRAN	
PK	ACUTE LTC_CD
PK	ADD_CHANGE_CD
PK	CASE_MGR_ID
PK	PA_DTL_STA
PK	PR_ID
PK	AHCCCS_ID
PK	SER_BEG_DAT
	PA_DTL_STA_DAT
	PA_NUM
	PR_NAME
	DIAG_CD
	DIAG_DESC
	PROC_NDC_CD
	PROC_NDC_DESC
	SER_END_DAT
	PA_NUM
	AHCCCS_ID
	PA_MTR_STA
	PA_MTR_STA_DAT
	PR_ID
	PR_LOC_CD
	NOT_REPRINT_IND
	NOT_SENT_DAT
	DAT_REC_ADDED
	LAST_MOD_TIME
	LAST_MOD_USR
	PR_GRP_ID

EC_ERR_FLD	
PK,I1,U1	ERR_CD
PK,I1,U1	INTL_FLD_NUM
PK,I1,U1	BEG_DAT
PK,I1,U1	FORM_TYP
	END_DAT
	ENC_CCL_IND
	CLM_CCL_IND
	DAT_REC_ADDED
	LAST_MOD_TIME
	LAST_MOD_USR

EC_ERR_TEST	
PK	ERR_CD
PK	ERR_DAT
PK	ERR_TIME
	CRN
	DAT_REC_ADDED
	LAST_MOD_TIME
	LAST_MOD_USR

EC_THRUPUT	
PK	WEEK_BEG
PK	CLM_TYP
PK	FORM_TYP
PK	RPT_TYP
	CLM_FWD
	CLM_ENT
	CLM_PRCS
	CLM_BAL
	REG_PAY
	CLM_PEN
	CLM_DISC
	CLM_0_30
	CLM_31_60
	CLM_61
	CLM_CCLS

EC_SER_STAT	
PK	SER_YR
PK	SER_MO
PK	INPUT_MODE
PK	FORM_TYP
PK	PR_MOD_NDC
	UNIT_ALLOW_AMT
	BIL_CHRG
	MDC_PAID_AMT
	OTH_CVG_PMT_AMT
	REIM_AMT
	DAT_REC_ADDED
	LAST_MOD_TIME
	LAST_MOD_USR

EC_ERR_DTL	
PK	ERR_CD
PK	ERR_CRN
	FORM_TYP
	HP_ID

EC_ENC_SUM	
PK	HP_ID
PK	CTR1_TYP
PK	CTR2_TYP
PK	FORM_TYP
PK	SERVICE_DAT
	CLM_TYP
	YTD_APP_ENC
	YTD_PND_ENC
	YTD_DNL_ENC
	DAT_REC_ADDED
	LAST_MOD_TIME
	LAST_MOD_USR

EC_ENTITY_EXMPT	
PK,U1	HP_ID
PK,U1	CTY_SER_AREA_CD
PK,U1	BEG_DAT
	END_DAT
	DAT_REC_ADDED
	LAST_MOD_TIME
	LAST_MOD_USR

EC_DOC_RQST	
PK,U1	RQST_NUM
PK,U1	CRN
	FORM_TYP
	CLM_TYP
	PRINT_IND
	RETURN_DAT
	DAT_REC_ADDED
	LAST_MOD_TIME
	LAST_MOD_USR

EC_CHECK_REF	
PK	VENDOR_NUM
PK	INVC_EC_NUM
PK	CHECK_DAT
	CHECK_NUM
	CHECK_AMT
	DAT_REC_ADDED
	LAST_MOD_TIME
	LAST_MOD_USR

EC_BTCH_OVRD	
PK,U1	ERR_CD
PK,U1	BEG_DAT
	END_DAT
	OVRD_TYP
	DAT_REC_ADDED
	LAST_MOD_TIME
	LAST_MOD_USR

EC_BIC	
PK,U1	JUL_DAT
PK,U1	BAT_NUM
PK,U1	CLM_TYP
PK,U1	FORM_TYP
PK,U1	TOT_NUM_DOC
PK,U1	STRT_DOC_NUM
PK,U1	END_DOC_NUM
PK,U1	BAT_STA
PK,U1	NUM_MISS_DOC
PK,U1	HCFA_CLM_CNTS
PK,U1	UB82_CLM_CNTS
PK,U1	FRMC_CLM_CNTS
PK,U1	HCFA_LINE_CNTS
PK,U1	UB82_LINE_CNTS
PK,U1	FRMC_LINE_CNTS
PK,U1	CLM_OPID
PK,U1	DAT_REC_ADDED
PK,U1	LAST_MOD_TIME
PK,U1	LAST_MOD_USR

EC_BIC_MISS	
PK,U1	JUL_DAT
PK,U1	BAT_NUM
PK,U1	MISS_DOC_NUM
PK,U1	MISS_DOC_REA
PK,U1	DAT_REC_ADD
PK,U1	LAST_MOD_TIME
PK,U1	LAST_MOD_USR

EC_ERR_DNL	
PK,U1	ERR_CD
PK,U1	END_DAT
	BEG_DAT
	DNL_REAS
	DAT_REC_ADDED
	LAST_MOD_TIME
	LAST_MOD_USR

EC_DOC_RQST	
PK,U1	RQST_NUM
PK,U1	CRN
	FORM_TYP
	CLM_TYP
	PRINT_IND
	RETURN_DAT
	DAT_REC_ADDED
	LAST_MOD_TIME
	LAST_MOD_USR

EC_CHECK_REF	
PK	VENDOR_NUM
PK	INVC_EC_NUM
PK	CHECK_DAT
	CHECK_NUM
	CHECK_AMT
	DAT_REC_ADDED
	LAST_MOD_TIME
	LAST_MOD_USR

EC_BTCH_OVRD	
PK,U1	ERR_CD
PK,U1	BEG_DAT
	END_DAT
	OVRD_TYP
	DAT_REC_ADDED
	LAST_MOD_TIME
	LAST_MOD_USR

EC_BIC	
PK,U1	JUL_DAT
PK,U1	BAT_NUM
PK,U1	CLM_TYP
PK,U1	FORM_TYP
PK,U1	TOT_NUM_DOC
PK,U1	STRT_DOC_NUM
PK,U1	END_DOC_NUM
PK,U1	BAT_STA
PK,U1	NUM_MISS_DOC
PK,U1	HCFA_CLM_CNTS
PK,U1	UB82_CLM_CNTS
PK,U1	FRMC_CLM_CNTS
PK,U1	HCFA_LINE_CNTS
PK,U1	UB82_LINE_CNTS
PK,U1	FRMC_LINE_CNTS
PK,U1	CLM_OPID
PK,U1	DAT_REC_ADDED
PK,U1	LAST_MOD_TIME
PK,U1	LAST_MOD_USR

EC_ERR_DNL	
PK,U1	ERR_CD
PK,U1	END_DAT
	BEG_DAT
	DNL_REAS
	DAT_REC_ADDED
	LAST_MOD_TIME
	LAST_MOD_USR

EC_ENTITY_EXMPT	
PK,U1	HP_ID
PK,U1	CTY_SER_AREA_CD
PK,U1	BEG_DAT
	END_DAT
	DAT_REC_ADDED
	LAST_MOD_TIME
	LAST_MOD_USR

EC_DOC_RQST	
PK,U1	RQST_NUM
PK,U1	CRN
	FORM_TYP
	CLM_TYP
	PRINT_IND
	RETURN_DAT
	DAT_REC_ADDED
	LAST_MOD_TIME
	LAST_MOD_USR

EC_CHECK_REF	
PK	VENDOR_NUM
PK	INVC_EC_NUM
PK	CHECK_DAT
	CHECK_NUM
	CHECK_AMT
	DAT_REC_ADDED
	LAST_MOD_TIME
	LAST_MOD_USR

EC_BTCH_OVRD	
PK,U1	ERR_CD
PK,U1	BEG_DAT
	END_DAT
	OVRD_TYP
	DAT_REC_ADDED
	LAST_MOD_TIME
	LAST_MOD_USR

EC_BIC	
PK,U1	JUL_DAT
PK,U1	BAT_NUM
PK,U1	CLM_TYP
PK,U1	FORM_TYP
PK,U1	TOT_NUM_DOC
PK,U1	STRT_DOC_NUM
PK,U1	END_DOC_NUM
PK,U1	BAT_STA
PK,U1	NUM_MISS_DOC
PK,U1	HCFA_CLM_CNTS
PK,U1	UB82_CLM_CNTS
PK,U1	FRMC_CLM_CNTS
PK,U1	HCFA_LINE_CNTS
PK,U1	UB82_LINE_CNTS
PK,U1	FRMC_LINE_CNTS
PK,U1	CLM_OPID
PK,U1	DAT_REC_ADDED
PK,U1	LAST_MOD_TIME
PK,U1	LAST_MOD_USR

EC_BIC_MISS	
PK,U1	JUL_DAT
PK,U1	BAT_NUM
PK,U1	MISS_DOC_NUM
PK,U1	MISS_DOC_REA
PK,U1	DAT_REC_ADD
PK,U1	LAST_MOD_TIME
PK,U1	LAST_MOD_USR

EC_ERR_DNL	
PK,U1	ERR_CD
PK,U1	END_DAT
	BEG_DAT
	DNL_REAS
	DAT_REC_ADDED
	LAST_MOD_TIME
	LAST_MOD